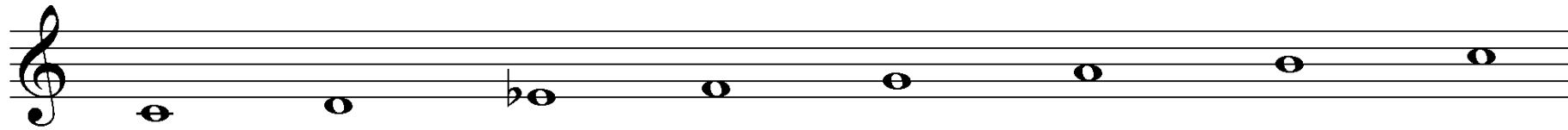
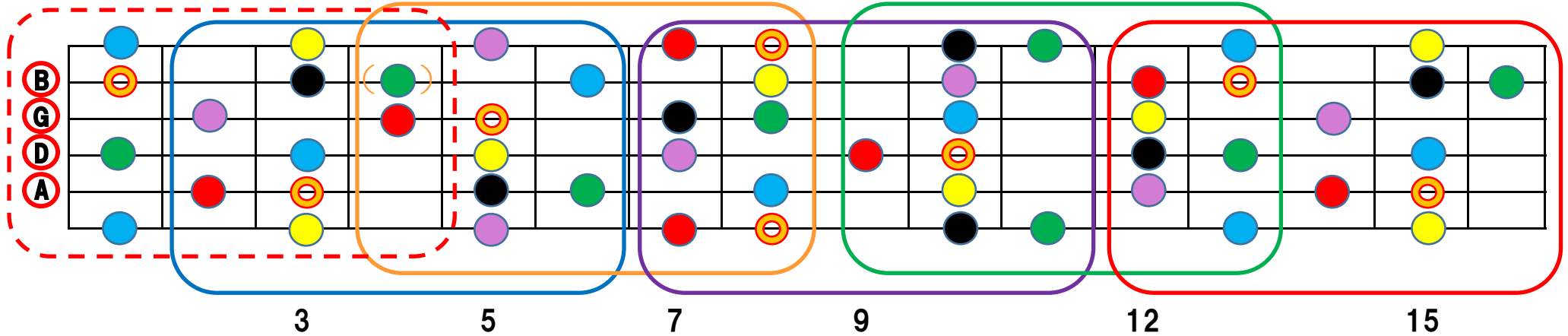


# Melodic Minor Scale 5 Positions



主音 Tonic



- |    |             |  |                 |           |           |                |                |
|----|-------------|--|-----------------|-----------|-----------|----------------|----------------|
|    | <b>CmM7</b> | <b>Dm7</b>   | <b>EbM7(#5)</b> | <b>F7</b> | <b>G7</b> | <b>Am7(b5)</b> | <b>Bm7(b5)</b> |
| C  |             | Melodic Minor Scale  | 【9 11 13or6】    |           |           |                |                |
| D  |             | Dorian b2 Scale (Super Dorian Scale)   | 【b9 11 13or6】   |           |           |                |                |
| Eb |             | Lydian Augment Scale   | 【9 #11 13or6】   |           |           |                |                |
| F  |             | Lydian Dominant 7th Scale (Lydian b7 Scale)                                  | 【9 #11 13】      |           |           |                |                |
| G  |             | Melodic Minor Perfect 5th Down Scale (Melodic Minor Perfect 5th Below Scale) | 【9 11 b13】      |           |           |                |                |
| A  |             | Locrian #2 Scale (Locrian $\flat$ 2 Scale)                                   | 【9 11 b13】      |           |           |                |                |
| B  |             | Altered Dominant 7th Scale (Altered Scale, Super Locrian Scale)              | 【b9 #9 #11 b13】 |           |           |                |                |